

TR-1MS

TRACE GC Capillary Column

Key Words

- 100% Methyl
- General Column
- Low Polarity

Introduction

An industry standard non-polar column suitable for a wide range of applications. An extremely low bleed phase with a maximum operating temperature of 380°C, the TR-1MS from Thermo Electron Corporation is ideal for all GC/MS applications. The column is particularly suited for applications which require a high temperature phase that is also inert.



Phase Type

100% Dimethyl Polysiloxane

Maximum Temperatures

370°C / 380°C

USP Category

G1, G2, G38

Cross Reference of Competitor Phases

Suitable Upgrade from DB-1, DB-Petro, BP1, HP-1, HP-1MS, Rtx-1, Ultra-1, SPB-1, SPB-1 Sulfur, Petrocol DH, CP-Sil 5CB, RSL-150, RSL-160, ZB-1, CB-1, OV-1, PE-1, 007-1(MS), SP-2100, SE-30, RH-1, CC-1, CP-Sil 5CB MS, VF-1ms

Application

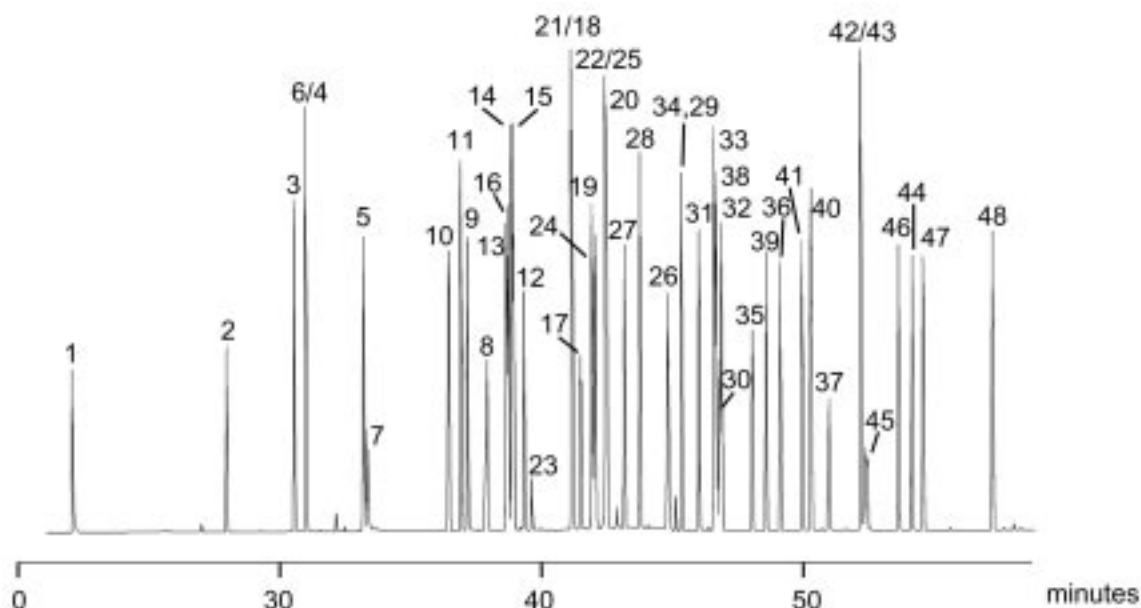
The analysis of Chlorinated and Nitroaromatic compounds is a good example of an environmental application. The inertness and high temperature capability of the column are features which are well suited to environmental analysis.

TR-1MS Product Information

ID (mm)	FILM THICKNESS (μm)	LENGTH (m)	PART NO.
0.25	0.25	30	260B142P
0.25	0.25	60	260B154P
0.32	0.25	30	260B143P
0.32	0.25	60	260B155P

Analysis of Chlorine, Phosphorus and Nitrogen based Pesticides

Part No.: 260B142P	Components	10. Propyzamide	20. MEP	30. Captan	40. Mepron:1
Phase: TR-1MS, 0.25µm film	1. DDVP	11. Diazinon	21. Esprocarb	31. Butamifos	41. Chloronitrofen
Column: 30m x 0.25mm ID	2. Etridiazole	12. TPN	22. Malathion	32. Napropamide	42. EDDP
Initial Temp: 50°C, 1min	3. Chloroneb	13. IBP	23. Probenazole	33. Flutolurin	43. EPN-ox
Rate1: 4°C/min	4. Molinate	14. ECP	24. Chloropyrifos	34. Prethirachlor	44. Pyridaphenthion
Final Temp: 280°C, 1.5min	5. BPMC	15. MBPMC	25. Thiobancarb	35. Isoxathion-ox	45. Iprodione
Detector: Mass Spec	6. Benfluralin	16. Bromobutide	26. Fthalide	36. Isoprothiolate	46. EPN
Carrier Gas: Helium, 33cm/sec	7. Pencycurone	17. MEP-ox	27. Pendimetaline	37. Tricyclazole	47. Bifenox
Injection Mode: Splitless, 0.5min	8. Simazin	18. Tolclophos-Methyl	28. Isofenfos	38. Buprofezine	48. Mefenacet
	9. Diazinon-ox	19. Simetryn	29. Methyl-Dymron	39. Isoxathion	



In addition to these offices, Thermo Electron Corporation maintains a network of representative organizations throughout the world.

Australia
+61 2 9898 1244

Austria
+43 1 333 50340

Belgium
+32 2 482 30 30

Canada
+1 800 532 4752

China
+86 10 5850 3588

France
+33 1 60 92 48 00

Germany
+49 6103 4080

Italy
+39 02 950 591

Japan
+81 45 453 9100

Netherlands
+31 76 587 98 88

Nordic
+46 8 556 468 00

South Africa
+27 11 570 1840

Spain
+34 91 657 4930

Switzerland
+41 61 48784 00

UK
+44 1442 233555

USA
+1 800 532 4752

www.thermo.com

©2004 Thermo Electron Corporation. All rights reserved. All trademarks are the property of Thermo Electron Corporation and its subsidiaries.

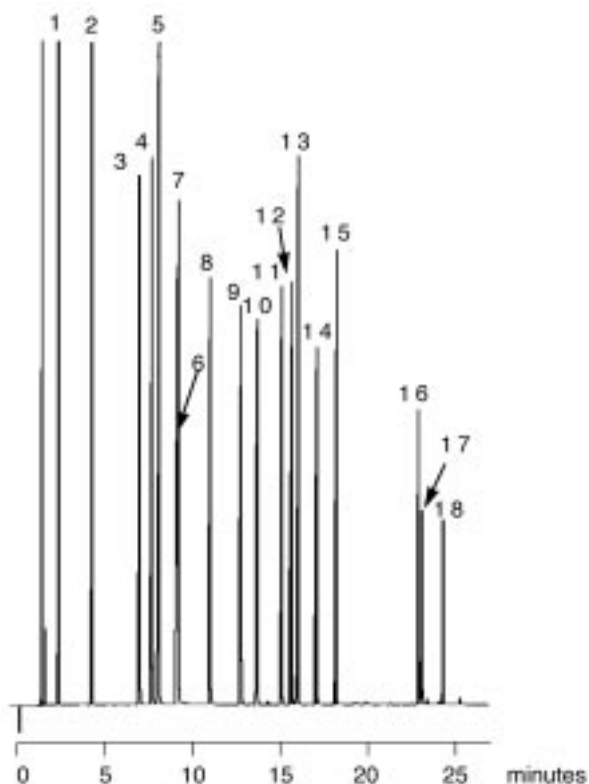
Specifications, terms and pricing are subject to change. Not all products are available in all countries. Please consult your local sales representative for details.

TN20073_E 08/04C

Analysis of Chlorinated and Nitroaromatic Compounds on TR-1MS

Phase: TR-1MS, 0.25µm film
Sample: 200ppm in dichloromethane
Column: 30m x 0.25 mm ID
Initial Temp: 40°C, 1 min.
Rate 1: 10°C/min to 300°C,
Final Temp: 300°C, 2 min.
Detector Type: MSD
Carrier Gas: He, 25.7 psi
Carrier Gas Flow: 1.8 mL/min.
Constant Flow: On
Average Linear Velocity: 35 cm/sec at 40°C
Injection Mode: Split
Split Ratio: 100:1
Injection Volume: 0.5 µL
Injection Temperature: 250°C
Autosampler: No
Liner Type: 4 mm ID Single Taper Liner
Liner Part Number: 453A1345
Column Part Number: 260B142P
Full Scan / SIM: Full scan 45-450

Components	
1. Phenol	10. 2,6-Dinitrotoluene
2. o-Chlorophenol	11. 2,4-Dinitrophenol
3. p-Dichlorobenzene	12. 2,4-Dinitrotoluene
4. Nitrobenzene	13. 4-Nitrophenol
5. o-Nitrophenol	14. 4,6-Dinitro-o-cresol
6. 2,4-Xylenol	15. 4-Chlorophenyl phenyl ether
7. 2,4-Dichlorophenol	16. 4-Bromophenyl phenyl ether
8. 4-Chloro-3-methylphenol	17. Hexachlorobenzene
9. 2,4,6-Trichlorophenol	18. Pentachlorophenol



Thermo
ELECTRON CORPORATION