

TR-WAX

TRACE GC Capillary Column

Key Words

- High Polarity
- Polyethylene Glycol
- High Polarity
- WAX

Introduction

The TR WAX from Thermo Electron Corporation is a polyethylene glycol based phase ideal for the analysis of all polar compounds. The column is particularly suited to esters, alcohols, ketones and glycols. The column is also suitable for the separation of aromatic isomers such as the xylene isomers.



Phase Type

Polyethylene glycol (PEG)

Maximum Temperatures

260°C / 280°C for films <1.0µm and 240°C/260°C for 1µm films

USP Category

G14, G15, G16, G20, G39

Cross Reference of Competitor Phases

DB-Wax, BP20, Rtx-Wax, Stabilwax, HP20M, HP-Wax, HP-INNOWax, Supelcowax-10, AT-Wax, Nukol, CP Wax 52CB, SUPEROX II, CB-WAX, Stabilwax, PE-CW, CC-WAX, 007-CW, Carbowax, HP-Innowax, PE-WAX, ZB-WAX

Application

The analysis of alcohols, especially short chain alcohols, usually results in some tailing on a non-polar column. The TR-WAX is a highly cross-linked and fully deactivated column resulting in excellent peak shape for all alcohols and can be seen from this application chromatogram.

TR-WAX Product Information

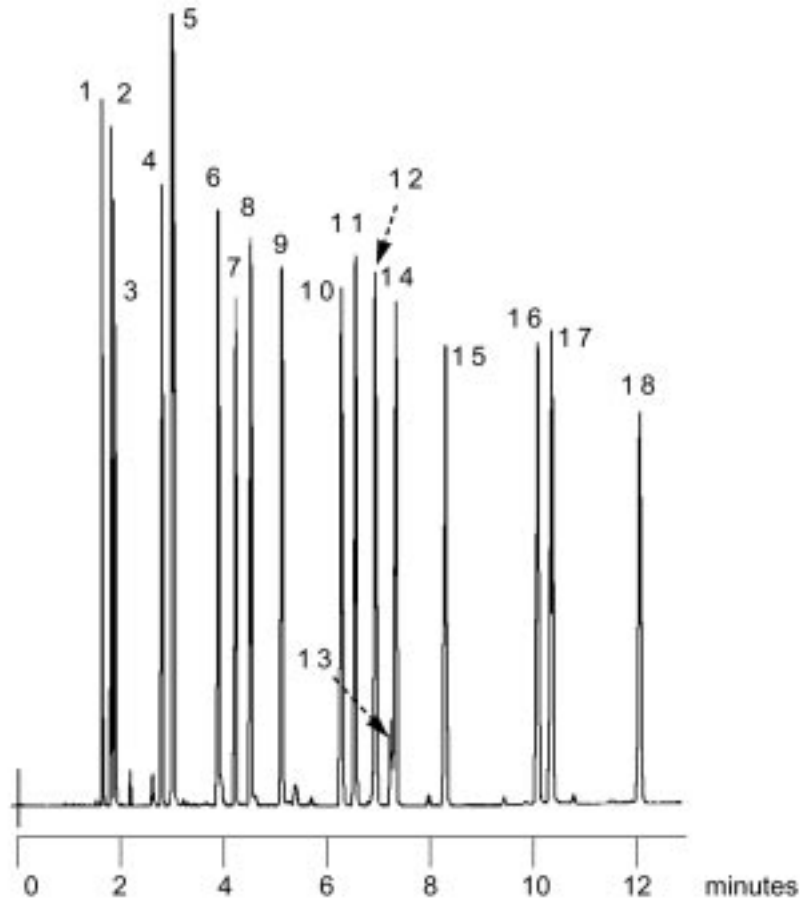
ID (mm)	FILM THICKNESS (µm)	LENGTH (m)	PART NO.
0.10	0.10	10	260W020P
0.25	0.25	15	260W130P
0.25	0.25	30	260W142P
0.25	0.25	60	260W154P
0.25	0.50	30	260W223P
0.25	0.50	60	260W235P
0.25	1.00	30	260W296P
0.32	0.25	15	260W131P
0.32	0.25	30	260W143P
0.32	0.25	60	260W155P
0.32	0.50	30	260W224P
0.32	0.50	60	260W236P
0.32	1.00	30	260W297P
0.53	0.50	30	260W225P
0.53	1.00	15	260W286P
0.53	1.00	30	260W298P
0.53	1.00	60	260W310P

Analysis of 18 Alcohols

Part No.: 260W142P
 Phase: TR-WAX, 0.25µm film
 Column: 30m x 0.25mm ID
 Initial Temp: 45°C, 2 min
 Rate: 3°C/min
 Final Temp: 80°C, 0 min
 Detector: FID
 Sensitivity: 128 x 10⁻¹² AFS
 Injection Mode: Split

Components

1. Methanol
2. Propan-2-ol
3. Ethanol
4. sec-Butan-1-ol
5. n-Propanol+2-Methyl-3-Buten-2-ol
6. d,l-3-Methyl-2-Butan-1-ol
7. Pentan-3-ol
8. d,l-2-Pentan-1-ol
9. n-Butanol
10. 2,4-Dimethyl, Pentan-3-ol
11. Hexan-3-ol
12. 2-Methyl Prop-2-en-1-ol
13. Crotyl Alcohol (2-Buten-1-ol)
14. Hexan-2-ol
15. Pentan-1-ol
16. 2-Methyl, Pentan-1-ol
17. 2-Ethyl Butan-1-ol
18. Hexan-1-ol



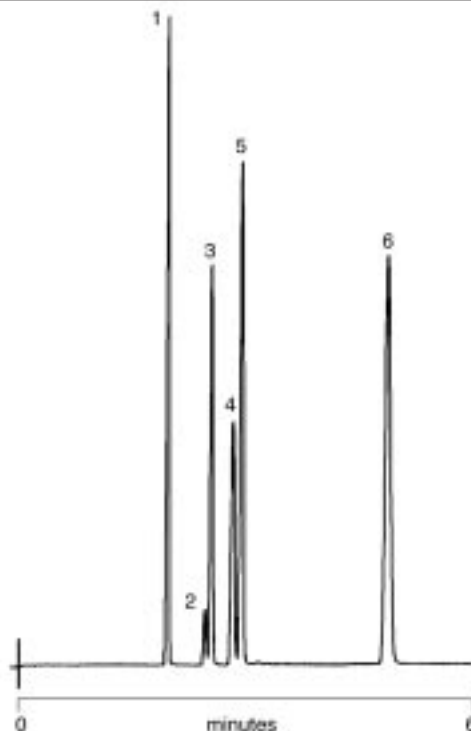
Blood Alcohol on TR-WAX

Part No.: 260W297P
 Phase: TR-WAX, 1.0µm film
 Column: 30m x 0.32mm ID
 Initial Temp: Isothermal, 60°C
 Detector: FID
 Sensitivity: 64 x 10⁻¹² AFS
 Injection Mode: Split

Notes: The TR-WAX column allows the use of aqueous solutions.

Components

1. Acetone
2. Ethyl Acetate
3. Methanol
4. iso-Propanol
5. Ethanol
6. n-Propanol



In addition to these offices, Thermo Electron Corporation maintains a network of representative organizations throughout the world.

- Australia**
+61 2 9898 1244
- Austria**
+43 1 333 50340
- Belgium**
+32 2 482 30 30
- Canada**
+1 800 532 4752
- China**
+86 10 5850 3588
- France**
+33 1 60 92 48 00
- Germany**
+49 6103 4080
- Italy**
+39 02 950 591
- Japan**
+81 45 453 9100
- Netherlands**
+31 76 587 98 88
- Nordic**
+46 8 556 468 00
- South Africa**
+27 11 570 1840
- Spain**
+34 91 657 4930
- Switzerland**
+41 61 48784 00
- UK**
+44 1442 233555
- USA**
+1 800 532 4752

www.thermo.com

©2004 Thermo Electron Corporation. All rights reserved. All trademarks are the property of Thermo Electron Corporation and its subsidiaries.

Specifications, terms and pricing are subject to change. Not all products are available in all countries. Please consult your local sales representative for details.

TN20078_E 08/04C

Thermo
ELECTRON CORPORATION