

Combining the Thermo Scientific Velos Pro ion trap with industry leading Orbitrap™ technology, the Thermo Scientific Orbitrap Velos Pro hybrid MS provides the next level of performance for your research.

## Thermo Scientific Orbitrap Velos Pro

Hybrid Mass Spectrometer  
Ultimate Confidence



- Collision cell with axial field gradient
- Resolving power of > 100,000
- Mass accuracy better than 1 ppm RMS
- Multiple fragmentation techniques: CID, HCD, and optionally ETD
- Parallel MS and MS<sup>n</sup> analysis
- Velos Pro ion trap generation II ion optics with neutral blocking technology increase robustness

The Thermo Scientific Orbitrap Velos Pro hybrid mass spectrometer combines the proven mass accuracy and high resolution of the Orbitrap mass analyzer with the increased sensitivity and improved cycle time of the Thermo Scientific Velos Pro dual-pressure linear ion trap.

The high mass accuracy of the Orbitrap Velos Pro system increases the confidence of peptide identification in complex samples by minimizing false positive identification. The high resolution provides certainty in analytical results by enabling molecular weight determination for intact proteins and in-depth analysis of isobaric species. The Higher Collisional Energy Dissociation (HCD) cell with axial field in the Orbitrap Velos Pro mass spectrometer is more efficient, resulting in improved quantitation of isobarically-labeled peptides, such as applications requiring Tandem Mass Tags (TMT). Electron Transfer Dissociation (ETD) generates complementary information for highly sensitive PTM analyses and *de novo* sequencing.

## Hardware Specifications

### Velos Pro Dual-Pressure Linear Trap

#### Ion Max™ API Source

- Enhanced sensitivity and ruggedness
- Sweep Gas™ reduces chemical noise
- 60° interchangeable ion probe orientation
- Removable metal ion transfer tube provides vent-free maintenance

#### S-Lens

- A progressively spaced stacked ring ion guide (S-lens)
- The S-lens is a radio frequency (RF) device that captures and efficiently focuses the ions in a tight beam
- Large variable spacing between electrodes allows for better pumping efficiency and improves ruggedness
- Automatic tuning program for optimizing transmission

#### Transfer Ion Optics

- Generation II ion optics with neutral blocking technology for improved robustness
- High stability and ion transmission efficiency dual-pressure linear ion trap
- High-pressure cell for improved precursor ion isolation and fragmentation efficiency
- Low-pressure cell for improved scan speed, resolving power and mass accuracy

#### Vacuum System

- Differentially pumped vacuum system to  $10^{-5}$  Torr
- Split-flow turbomolecular pump controlling vacuum in three regions
- Dual rotary vacuum pump configuration
- Aluminum high-vacuum analyzer chambers
- Novel secondary electron multipliers with high linear dynamic range for improved quantitation capabilities
- Digital electronic noise discrimination

### Orbitrap Mass Analyzer

- Gas-free multipole ion transfer optics
- Improved gas (nitrogen) filled C-Trap
- High-transmission ion transfer optics
- Straight multipole collision cell with axial field for HCD
- Orbital trap
- Active temperature control using a Peltier element
- Differentially pumped vacuum system with:
  - Rotary vane pumps as fore vacuum pumps, one water-cooled 60 L turbomolecular pump, and two water-cooled 210 L turbomolecular pumps
  - Final vacuum under operating conditions  $< 4 \times 10^{-10}$  Torr
  - Vacuum control by active Pirani gauge and cold ion gauge
- Low noise detect amplifiers
- 14-bit signal digitization
- Ultra-fast real-time data acquisition and instrument control system
- Automatic calibration of all transfer and Orbitrap parameters via instrument control software

#### Options

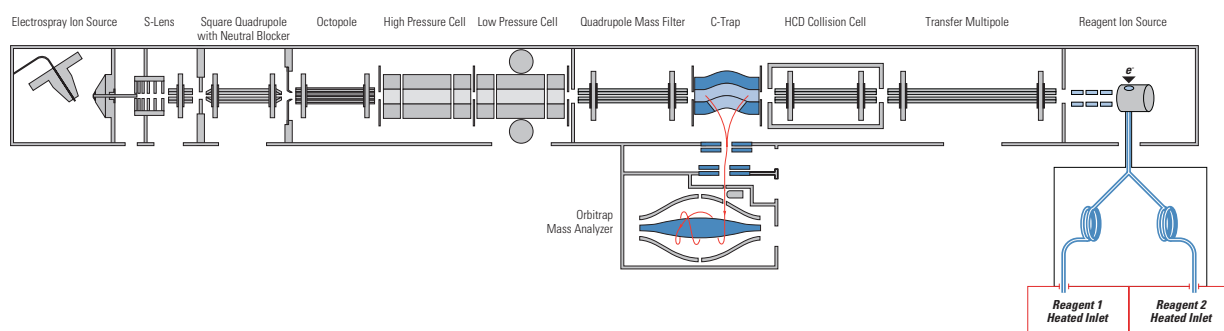
- H-ESI II – Heated Electrospray Ionization Source for enhanced ionization efficiency with flow rates of 1  $\mu\text{L}/\text{min}$  up to  $< 2,000 \mu\text{L}/\text{min}$
- ESI probe compatible with liquid flow rates of  $< 1 \mu\text{L}/\text{min}$  to 1 mL/min without splitting (required)
- Nanospray source supports static packed tip and dynamic nanospray experiments, compatible with liquid flow rates of 50 nL/min to 2  $\mu\text{L}/\text{min}$
- APCI source compatible with liquid flow rates of 50  $\mu\text{L}/\text{min}$  to 2 mL/min without splitting. Lower limit is dependent on gauge of needle used
- APCI/APPI source compatible with liquid flow rates of 50  $\mu\text{L}/\text{min}$  to 2 mL/min without splitting
- Metal needle option for high- and low-flow analyses

### Performance Characteristics

Mass Range	$m/z$ 50-2,000, $m/z$ 200-4,000
Resolution	60,000 at $m/z$ 400 at a scan rate of 1 Hz, minimum resolution 7,500, maximum resolution $> 100,000$ at $m/z$ 400
Mass Accuracy	$< 3$ ppm RMS with external calibration $< 1$ ppm RMS using internal calibration
MS/MS Sensitivity of Ion Trap	Electrospray Ionization (ESI): 2 $\mu\text{L}$ of a 50 fg/ $\mu\text{L}$ solution of reserpine (100 femtograms total) injected at a flow of 500 $\mu\text{L}/\text{min}$ will produce a minimum signal-to-noise ratio of 100:1 for the transition of the isolated protonated molecular ions at $m/z$ 609 to the largest two product ions, $m/z$ 397 and $m/z$ 448, when the mass spectrometer is operated at unit resolution in the full-scan MS/MS mode, scanning the product ion spectrum from $m/z$ 165-615. <sup>[1]</sup>
Dynamic Range	$> 5,000$ within a single scan guaranteeing specified mass accuracy
MS Scan Power	MS <sup>n</sup> , for n = 1 through 10
ETD Option	3 $\mu\text{L}/\text{min}$ infusion of a 1 pmol/ $\mu\text{L}$ solution of Angiotensin I will produce an electron transfer dissociation fragmentation efficiency of $> 15\%$
Analog Inputs	One (1) analog input (0 - 1 V), One (1) analog (0 - 10 V)

<sup>1</sup> Requires H-ESI II

### Schematic of the Orbitrap Velos Pro Hybrid MS



## Software Features

### Data System

- High performance PC with Intel® microprocessor
- High resolution LCD color monitor
- Microsoft Windows® XP operating system
- Microsoft Office XP software package
- Thermo Scientific Xcalibur processing and instrument control software
- FT-Programs software tools: Protein Calculator and Recalibrate Offline

### Operation Modes

- Data Dependent Decision Tree – automatic selection of the optimal fragmentation technique based on peptide properties (charge state,  $m/z$ ) for highest fragmentation efficiency
- High-resolution accurate-mass scans at high repetition rates
- Precursor ion isolation and fragmentation in the linear ion trap (CID) with high resolution accurate mass MS/MS and MS<sup>n</sup> data acquisition in the Orbitrap mass analyzer
- Data Dependent™ scans using both the linear ion trap and the Orbitrap mass analyzer
- Data Dependent MS/MS with parallel acquisition of multiple MS<sup>n</sup> scans in the linear ion trap while acquiring a high resolution full scan MS spectrum in the Orbitrap analyzer
- Ion Mapping, Neutral Loss Ion Mapping, Parent Ion Mapping, user selectable Dynamic Exclusion™, Nth order Triple Play experiment, Data Dependent Ion Tree experiment, Total Ion Map experiment

### Optional Application-Specific Software

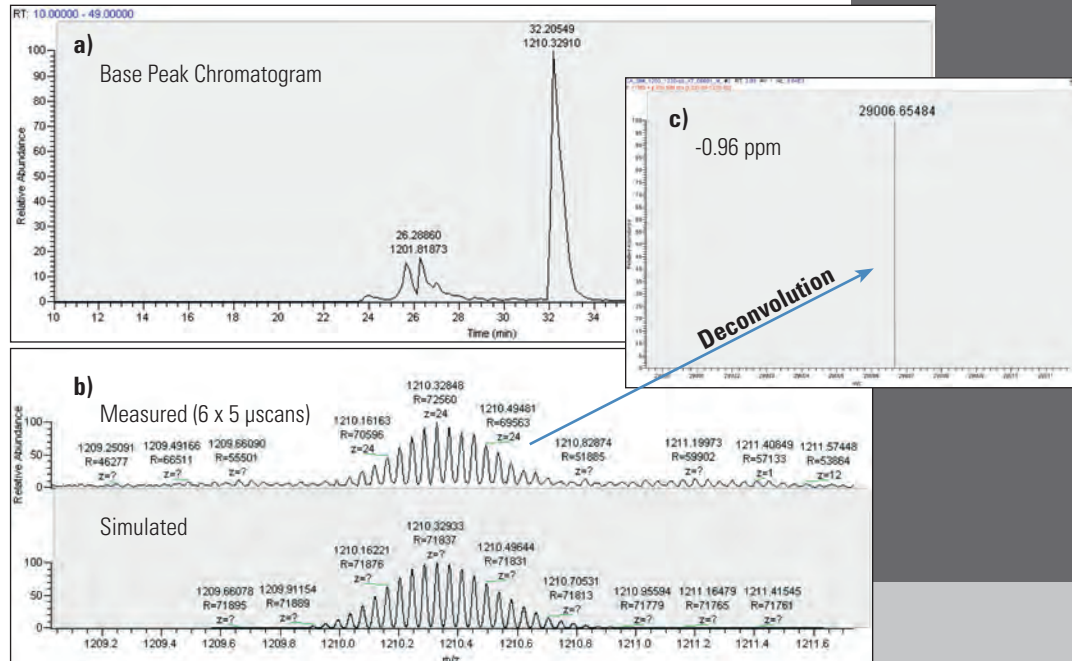
- Thermo Scientific Proteome Discoverer – Mass informatics platform for protein scientists
- ProSightPC™ – Top-down identification and characterization of proteins incl. PTMs
- Thermo Scientific MetWorks – automated metabolite identification using spectral trees and accurate mass data
- Mass Frontier™ – predictive fragmentation software for spectral interpretation and classification software to identify unknowns
- PEAKS™ – powerful, easy *de novo* sequencing
- Thermo Scientific SIEVE – automated differential expression analysis in proteomics or metabolomics applications
- ProMass™ Deconvolution – intact protein analysis

### Exclusive Technologies

- Precursor ion selection in the linear ion trap and fragmentation in the new collision cell (HCD) with high resolution accurate mass detection in the Orbitrap mass analyzer
- Pulsed-Q Collision Induced Dissociation (PQD) enables trapping of low mass fragment ions
- Unique, patented\* Automatic Gain Control (AGC™) ensures that the ion trap is always filled with the optimum number of ions for any scan type
- Dynamic Exclusion allows acquisition of MS/MS and MS<sup>n</sup> spectra from lower intensity ion species
- Wideband Activation™ generates more structurally informative spectra
- Normalized Collision Energy™ for both CID and HCD fragmentation techniques providing reproducible data from instrument to instrument
- Stepped Normalized Collision Energy (CID and HCD) allows for the variation of the collision energies in MS/MS experiments
- Multistage Activation (MSA) generates combination of MS/MS spectra and MS<sup>3</sup> spectra based on a user defined neutral loss

### Advanced Data Dependent Experiments

- Data Dependent features trigger acquisition of MS<sup>n</sup> spectra only when a compound of interest is detected
- Isotopic Data Dependent scanning software triggers MS/MS scanning only when a specified isotopic pattern is detected
- Ion Mapping automatically generates a three-dimensional MS/MS map, yielding product ions, precursor ions, and neutral loss information
- Ion Mapping Browser software displays data generated by Ion Mapping experiments
- Data Dependent Ion Tree performs MS<sup>n</sup> experiments on up to 25 species
- MS<sup>n</sup> Browser software displays data generated by Data Dependent Ion Tree and Ion Mapping experiments
- Monoisotopic precursor selection for Data Dependent MS/MS experiments
- Data Dependent (accurate) Neutral Loss - Trigger MS<sup>3</sup> scans on only the MS/MS product ions with a pre-defined neutral loss



**Intact proteins: LC-MS analysis of intact carbonic anhydrase (a). Zoom-in on charge state 24+ demonstrating the resolving power capabilities of the Orbitrap Velos Pro system (b). Deconvoluted spectrum to display monoisotopic mass of the intact protein with an accuracy of better than 1 ppm (c).**

## Installation Requirements

### Orbitrap Velos Pro Hybrid MS

#### Power

- 230 V<sub>ac</sub> ± 10% 3 phase, 15 Ampere, 50/60 Hz, with earth ground for the instrument
- 120 or 230 V<sub>ac</sub> single phase with earth ground for the data system
- 120 or 230 V<sub>ac</sub> single phase, 15 Ampere, with earth ground for the water chiller

#### Gas

##### Helium

Ultra-high purity (99.999%) with less than 1 ppm each of water, oxygen and total hydrocarbons

##### Nitrogen

High purity (99.5% pure, flow rate 15 L/min) nitrogen gas supply for the API source and the C-Trap

#### Environment

- System averages 2,800 W (10,000 Btu/hr) output when considering air conditioning needs
- Operating environment must be 16 - 26 °C (59 - 78 °F) and relative humidity must be 50 - 80% with no condensation
- Optimum operating temperature is 18 - 21 °C (65 - 70 °F)

#### Weight

MS: ~ 620 kg

#### Water Cooler

Provided with the instrument

#### Dimensions

MS with ETD: (h x w x d)  
142 cm x 87 cm x 171 cm  
55.9 in x 34.3 in x 67.3 in

MS without ETD:

142 cm x 87 cm x 142 cm  
55.9 in x 34.3 in x 55.9 in

#### ETD Option

#### Gas

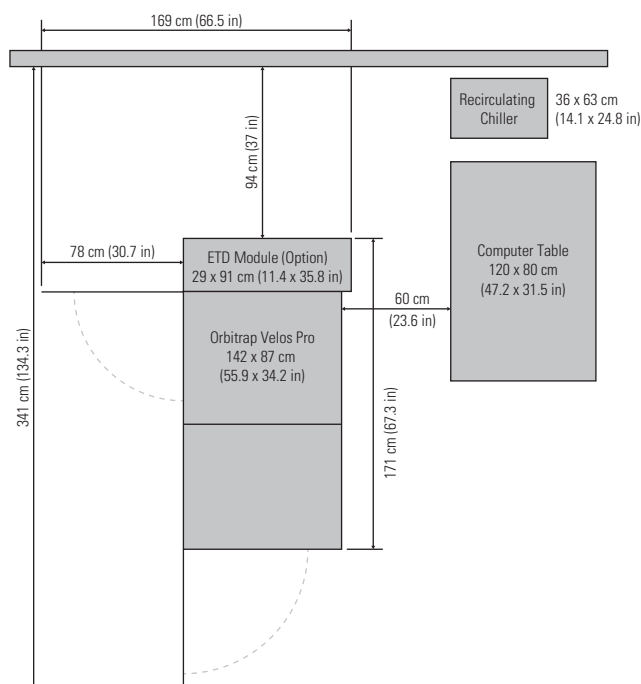
Nitrogen supply for ETD option: Ultra-high purity nitrogen (UHP, 99.999%) with less than 1 ppm each water and oxygen

#### Access

At least 94 cm access required at the rear of the instrument

#### Environment

System averages with ETD 3,500 W (12,000 Btu/hr) output when considering air conditioning needs



[www.thermoscientific.com/OrbitrapVelosPro](http://www.thermoscientific.com/OrbitrapVelosPro)

© 2011 Thermo Fisher Scientific Inc. All rights reserved. Intel is a registered trademarks of Intel Corporation; Microsoft and Windows are registered trademarks of Microsoft Corporation; Mass Frontier is a trademark of HighChem, Ltd.; PEAKS is a trademark of Bioinformatics Solutions, Inc; ProMass is a trade-mark of Novatia, LLC; TMT is a registered trademark of Proteome Sciences plc. All other trademarks are the property of Thermo Fisher Scientific Inc. and its subsidiaries.

\*Selected patents in selected countries Specifications, terms and pricing are subject to change. Not all products are available in all countries. Please consult your local sales representative for details.

**Africa-Other** +27 1 70 1840  
**Australia** +61 3 9757 4300  
**Austria** +43 1 333 50 34 0  
**Belgium** +32 53 73 42 41  
**Canada** +1 800 530 8447  
**China** +86 10 8419 3588  
**Denmark** +45 70 23 62 60

**Europe-Other** +43 1 333 50 34 0  
**Finland/Norway/Sweden** +46 8 556 468 00  
**France** +33 1 60 92 48 00  
**Germany** +49 6103 408 1014  
**India** +91 22 6742 9434  
**Italy** +39 02 950 591

**Japan** +81 45 453 9100  
**Latin America** +1 561 688 8700  
**Middle East** +43 1 333 50 34 0  
**Netherlands** +31 76 579 55 55  
**New Zealand** +64 9 980 6700  
**Russia/CIS** +43 1 333 50 34 0  
**South Africa** +27 11 570 1840

**Spain** +34 914 845 965  
**Switzerland** +41 61 716 77 00  
**UK** +44 1442 233555  
**USA** +1 800 532 4752



Thermo Fisher Scientific (Bremen) GmbH  
 Management System Registered to ISO 9001:2008

PS30231\_E 05/11G

**Thermo**  
 SCIENTIFIC